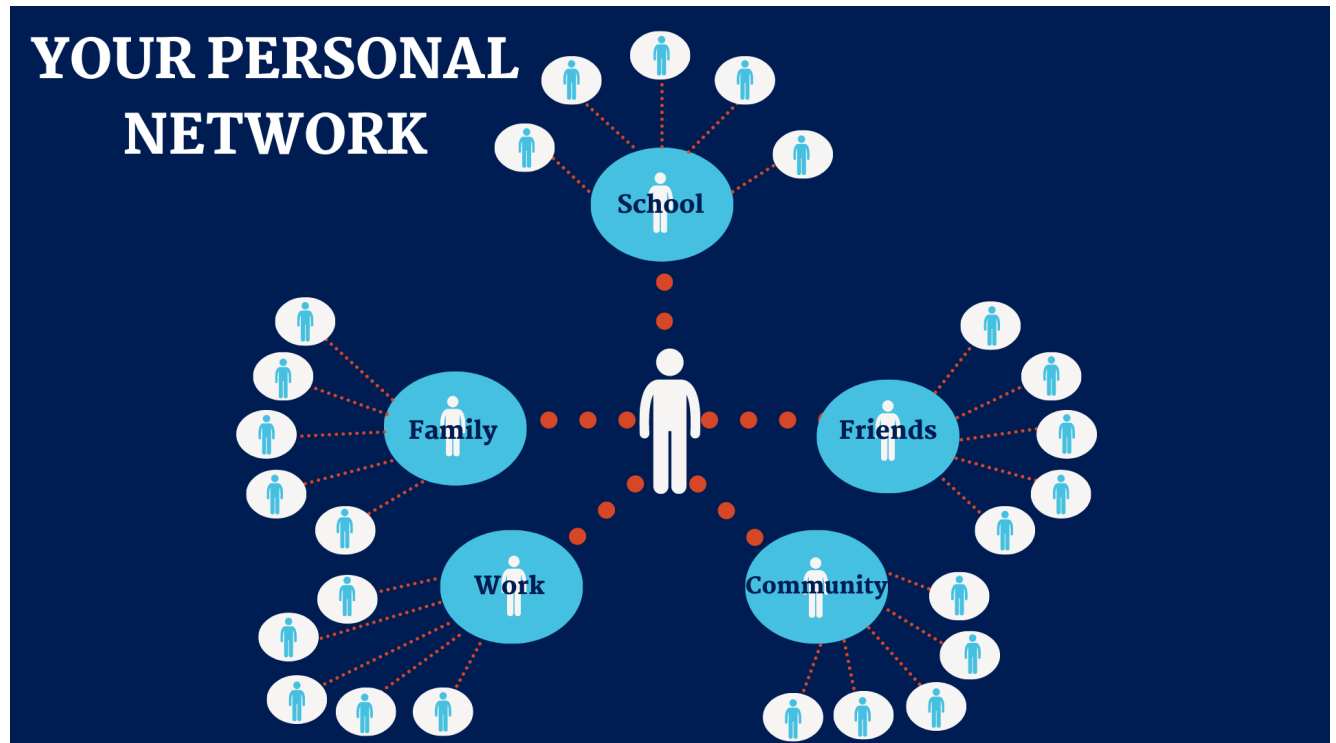


Weaving Your Web



Introduction

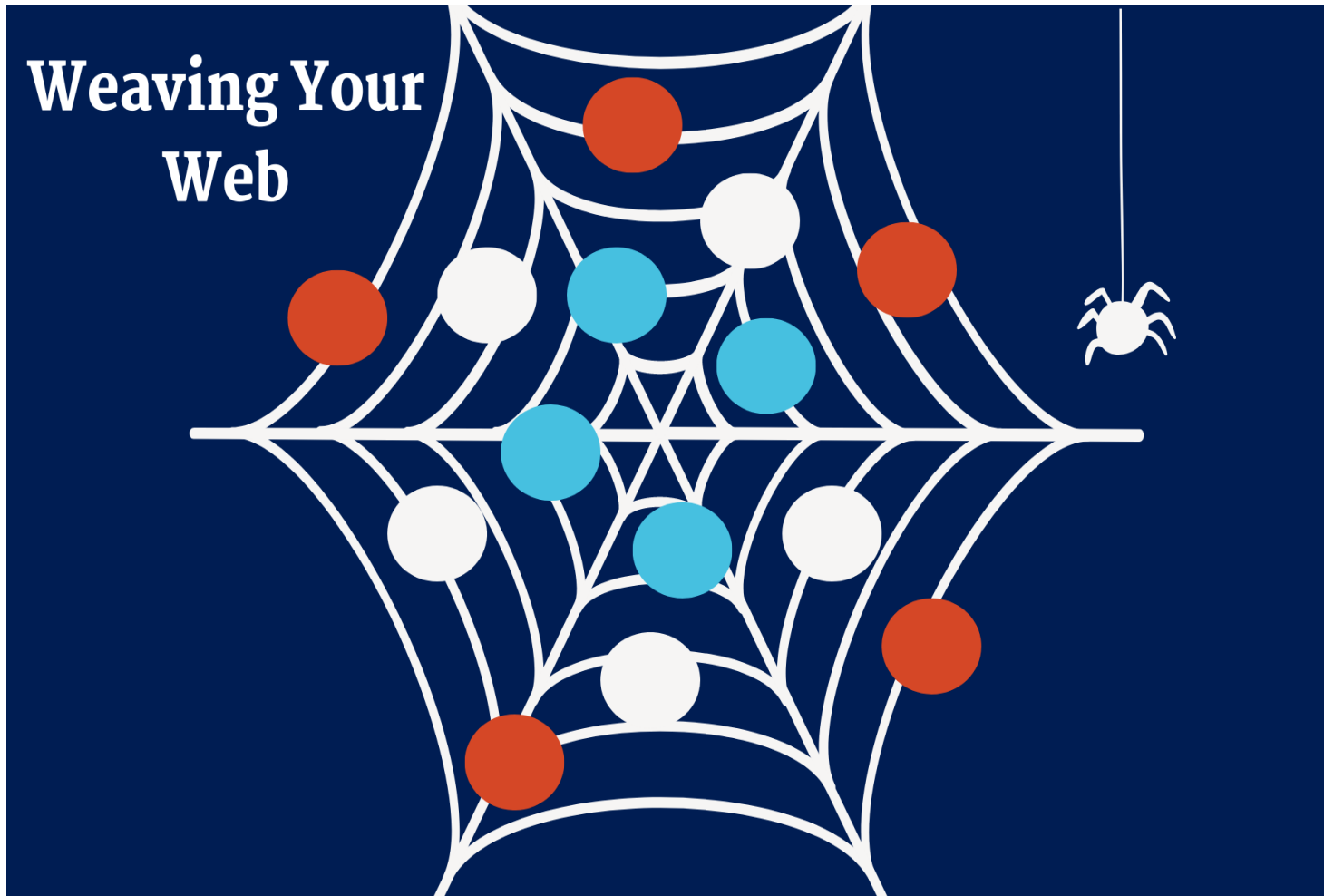
We all need support from others on our pathway to success, whether they are family members, mentors, coaches, neighbors, employers, general acquaintances, and/or friends. These people make up your network! You'll want to continue to add people to your network and watch it grow because the more contacts you have, the more opportunities you'll discover. This activity will help you "weave your web" by identifying those that are already part of your network and thinking about those who you would like to add.

Instructions

- Using the image below, create your own "spider web" by identifying the inner layer of your web. This should include people you are closest to, like immediate family, friends, teachers, and others who you have direct contact with regularly. Write their names/initials in the inner **light blue** bubbles of your spider web.
- Think about your second layer: people who are "a friend of a friend" or someone you don't have regular contact with but those who can strengthen your web or offer support. They can be general acquaintances or maybe people who your inner network can connect you with. Write their names/initials in the **white** bubbles of your spider web.
- Identify the type of people you want to add to your network. Think about a possible career goal you have. Who do you need to include in your



network in order to support that goal? For example, if you want to become a veterinarian, you will want to consider who in your existing “web” has connections to a veterinarian but also do some research to see if there is a veterinarian in the area that you can meet and maybe shadow for the day or have a conversation with. Write their names/initials in the **orange** bubbles of your spider web.



Reflecting & Connecting

- Now that you have created your web, think about what you can do to develop your networking skills. Here are some suggestions:
 - If you are meeting people for the first time, either at a school function, a sporting event, or at your friend’s house, be prepared to introduce yourself, ask them questions, and engage in small-talk. Follow up afterwards if appropriate.



ESSENTIAL SKILLS™

NETWORKING



- Don't forget to get contact info so you can stay connected. Social media is a great start.
- Look your best. First impressions go a long way so be sure to maintain simple grooming habits (like showering, brushing your teeth, combing your hair, and using deodorant).
- Dress appropriately for the occasion. Wearing a sleeveless shirt and heels when job shadowing at a veterinarian clinic may be inappropriate. Think about what is suitable for each instance and remember that it's always better to be slightly overdressed than underdressed!
- Write things down! Even if you have a good memory, be sure to write down correct spelling of names, contact information, follow up instructions, important dates, etc., when meeting with new contacts for your network.
- Use new acquaintances to help build your network. For example, ask the person if they can suggest additional people you could contact to learn more.
- Recognize your value. Be willing to become part of someone else's web!